



WATER SERVICE™
E L I T E

Product & Technology Portfolio

2024 - 25

www.WaterServiceElite.com



WATER IS PRECIOUS




WATER SERVICE™

E L I T E

“pure & elite experience”





At **Water Service Elite**, we are dedicated to the future of intelligent infrastructure, elevating living standards and enhancing the sustainability of communities through cutting-edge water treatment solutions.

Our unwavering commitment to innovation has led us to partner with groundbreaking technologies, ensuring impeccable water quality.

Our expertise is certified and recognized by the Division of Measurements and Standards, and our C55 contracting license attests to our specialized skills in water filtration product installation. Beyond certifications and products, our core values center on excellence and client satisfaction.

We understand the intricacies of construction and contracting, ensuring that our water infrastructure enhances every residence it serves. Our mission is clear: Seamlessly integrate advanced technology for sustainability, quality, and convenience.

Join us in shaping a smarter, purer, and more sustainable future.

Elite Water Solutions



Contaminant Removal
Clean and Pure Water at Your Fingertips



Hard Water Issues
Say Goodbye to Hard Water Problems



Odor and Taste Issues
Enjoy Fresh and Great-Tasting Water



Water Conservation Solutions
Conserve Water, Save the Planet

WHO WE SERVE

Enhancing water quality
across diverse sectors



Food & Beverage



Pool & Spa



Disaster Relief



Commercial



Residential



Hospitality



Hospital



Design

Build



IMPLEMENTATION

BFD HIGH-FLOW CARTRIDGES

BFD High-Flow Water Filter Cartridges are specialized filters designed to efficiently handle high-volume water flow rates while effectively removing contaminants. Ideal for residential, commercial, or light industrial applications, these cartridges ensure large volumes of water are treated quickly and efficiently.

Key Features:

- **Durable Construction:** Made with robust materials such as polypropylene or polyester, these cartridges withstand higher water pressure and temperatures (refer to the spec sheet for details).
- **High Efficiency:** Capable of filtering various contaminants including chlorine, chloramines, hard minerals, heavy metals, and more, ensuring optimal water quality.
- **Easy Installation & Maintenance:** Designed for hassle-free installation and minimal maintenance, these filters are a reliable and cost-effective solution for high flow water filtration.

Scan for

- Spec. Sheet
- 3D modeling
- Augmented reality





BFD-7.5 Single

Maximum Flow Rate: 7.5 GPM
Overall Size: 11 3/4" x 25" x 7 "
Plumbing Size: 3/4"
Filtration type: 5 Micron chlorine reduction and scale control (type of filter can be customized)



BFD-15 Double

Maximum Flow Rate: 15 GPM
Overall Size: 16" x 25" x 7 "
Plumbing Size: 3/4" or 1"
Filtration type: 5 Micron chlorine reduction and scale control (type of filter can be customized)



BFD-30 Quad

Maximum Flow Rate: 30 GPM
Overall Size: 26 1/2" x 25" x 7 "
Plumbing Size: 3/4" or 1"
Filtration type: 5 Micron chlorine reduction and scale control (type of filter can be customized)

High-flow water cartridges with precise micron ratings can be customized with a variety of media options to meet filtration needs, including (but not limited to) chlorine, chloramines, hard minerals (scale), heavy metals, and a broad spectrum of waterborne contaminants, offering numerous additional benefits to ensure optimal water quality.

Advanced Ultra-Filtration

Our **Advanced Ultra-Filtration** system represents the pinnacle of water filtration technology. Specifically engineered for both residential and commercial applications, this state-of-the-art system is adept at removing sub-micron impurities, ensuring water quality that's not just clean, but pristine.

When combined with our BFD high-flow cartridges, this synergy provides an unparalleled flow rate without compromising filtration efficiency and significant reduction in backwash volume. This robust system offers not only exceptional quality (0.015 microns) but also efficiency, making it ideal for high-demand environments. Whether it's for a bustling commercial establishment or a modern residence, our advanced Ultra-Filtration membranes paired with BFD high-flow cartridges stands as a testament to unmatched water treatment, delivering both quantity and quality seamlessly.

Scan for

- Spec. Sheet
- 3D modeling
- Augmented reality





UF-7.5 Single

Maximum Flow Rate:

7.5 GPM

Overall Size:

41" x 17" x 7 1/2"

Plumbing Size:

3/4"

Home size:

tailored for smaller homes or ADUs measuring under 1000 sq/ft, up to 7.5 GPM



UF-15 Double Double

Maximum Flow Rate:

15 GPM

Overall Size:

41" x 27" x 7 1/2"

Plumbing Size:

3/4" or 1"

Home size:

designed for high-demand residential applications that require continuous water usage, typically in homes ranging from 1000 to 2500 sq/ft, up to 15 GPM



UF-15 Double

Maximum Flow Rate:

15 GPM

Overall Size:

62" x 24" x 7 1/2"

Plumbing Size:

3/4" or 1"

Home size:

designed for high-demand residential applications that require continuous water usage, typically in homes ranging from 1000 to 2500 sq/ft, up to 15 GPM



UF-30 Quad

Maximum Flow Rate:

30 GPM

Overall Size:

62" x 39" x 7 1/2"

Plumbing Size:

1" or 1 1/4"

Home size:

designed for high-demand residential applications that require continuous water usage, typically in homes ranging from 3000 to 5000 sq/ft, up to 30 GPM

Features:

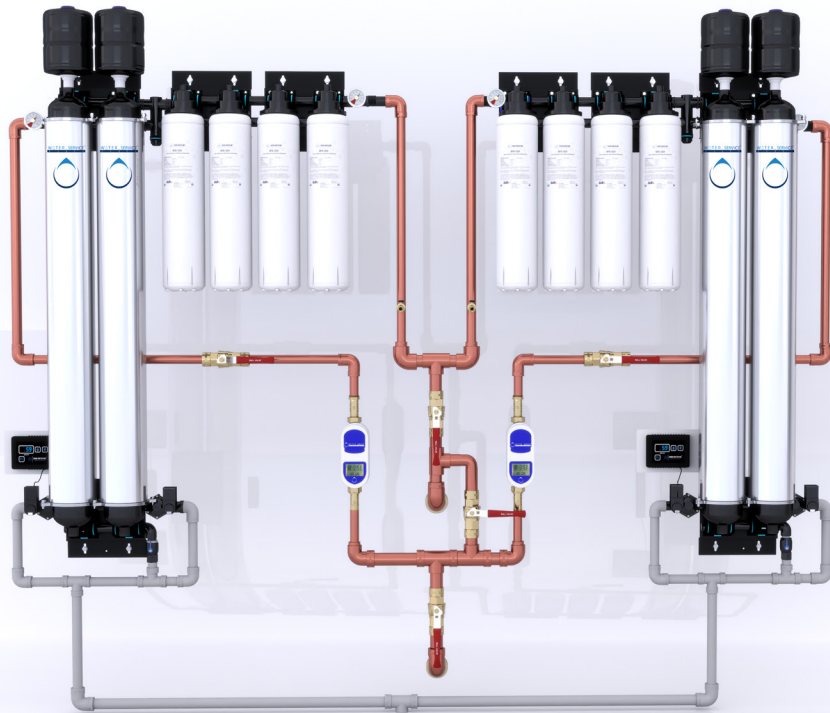
- **Filtration type:** 0.015 micron UF membranes & 5 micron BFD high flow cartridges.
- Pre-programmed controller, up to 80% less water waste, non-brine backwash that is safe for septic systems, daylight drain, or French drain
- Advanced sub-micron filtration tested and certified by NSF
- Integrated sub-metering and leak detection

Wall-Mount Ultra-Filtration System



Superior Water Filtration at Every Tap

In a world where water quality is increasingly compromised by contaminants like microplastics, ensuring safe drinking water is more important than ever. Water Service Elite presents a cutting-edge solution with our custom-designed Wall Mount Ultrafiltration System, engineered to handle flow rates of up to 60 gallons per minute. Our advanced system features a 0.015-micron ultrafiltration membrane that outperforms traditional filtration technologies by effectively removing microplastics, bacteria, organic molecules, and silt. The result? Water that is not only cleaner but also crystal clear.



Key Features:

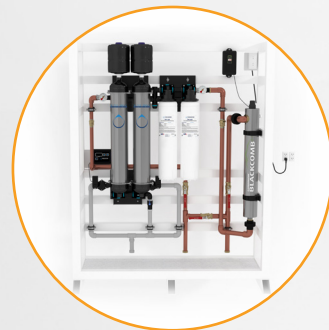
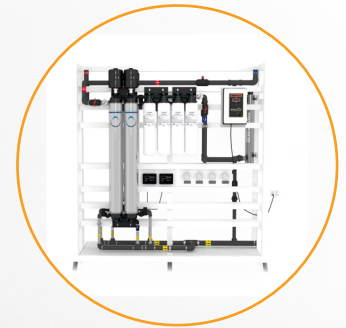
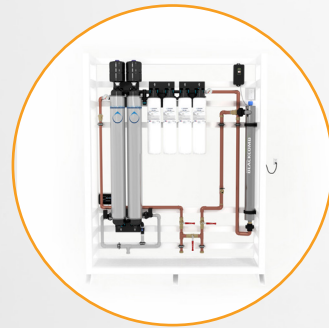
- **Advanced Filtration Technology:** Our system includes Best Filter Design (BFD) cartridges with dual-action filtration. The 0.2-micron catalytic carbon technology, paired with scale control, ensures each drop of water is treated to the highest standard.
- **Eco-Friendly Efficiency:** The system's pre-programmed controller optimizes water usage, reducing waste by up to 80%. With a non-brine backwash feature, it's safe for septic systems, daylight drains, and French drains—perfect for environmentally conscious households.
- **Certified Performance:** NSF-certified for advanced sub-micron filtration, our system meets stringent health and safety standards, providing you with complete peace of mind.
- **User-Friendly Design:** The platform is designed for easy plug-and-play installation, ensuring a hassle-free experience from start to finish.

Integrated Leak Detection and Water Management

- **24/7 Leak Detection:** Our system includes state-of-the-art leak detection technology that monitors system integrity around the clock, preventing water waste and protecting your home from potential water damage. This system doesn't just provide clean water; it offers you the assurance that your family's health is safeguarded. Discover the Water Service Elite difference and experience unmatched water quality. Visit our website or contact us today to learn more about how our innovative solutions can elevate your water quality and contribute to a healthier lifestyle.



Advanced Ultra-Filtration Platform



- Scan for
- Spec. Sheet
 - 3D modeling
 - Augmented reality



UF- Platform 15

Feed Pressure :

Min 65 psi (75-85 psi is ideal)

Filtration Type:

0.015 micron UF membrane
High capacity chlorine reduction and scale control
Ultra-Violet disinfection
Integrated leak detection and water management



UF- Platform 30

Feed Pressure :

Min 65 psi (75-85 psi is ideal)

Filtration Type:

0.015 micron UF membrane
High capacity chlorine reduction and scale control
Ultra-Violet disinfection
Integrated leak detection and water management



UF- Platform 60

Feed Pressure :

Min 65 psi (75-85 psi is ideal)

Filtration Type:

0.015 micron UF membrane
High capacity chlorine reduction and scale control
Ultra-Violet disinfection
Integrated leak detection and water management

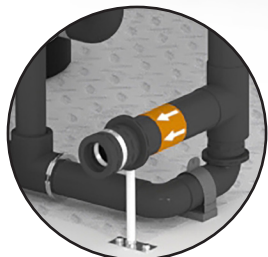
Features:

- Pre-programmed controller, up to 80% less water waste, non-brine backwash that is safe for septic systems, daylight drains, or French drains
- Advanced sub-micron filtration tested and certified by NSF
- Integrated sub-metering and leak detection
- Platform design for plug and play applications

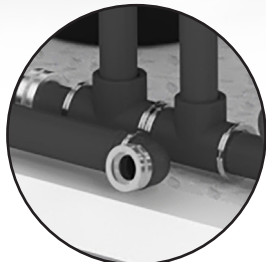
Customized Solutions

Tailored to Your Space





Drain Port



Inlet Port



Outlet Port

System Features:

- Modular design for flexible customization.
- Filters contaminants down to 0.015 microns, including bacteria, viruses, and cysts.
- Arrives fully assembled, pre-plumbed, and pre-wired for easy installation.
- Integrated UV light sanitation.
- Programmed backwashing for media regeneration.

Emphasizing flexibility and customization to meet unique space limitations and design preferences, our water enhancement system stands out as a remarkably adaptable solution for any home.

Tailored specifically to accommodate your individual requirements, it can be seamlessly integrated into various spaces, ensuring an efficient and unobtrusive fit.

This system features 11 stages of water quality enhancement, from organic and sediment reduction to ultrafiltration and UV disinfection, adeptly enhancing water safety and clarity. Its modular design is a key advantage, allowing for bespoke configurations that align perfectly with your space constraints and aesthetic preferences.

Capable of filtering out contaminants as small as 0.015 microns, it effectively targets bacteria, viruses, and cysts, thereby improving water quality. The system is designed for convenience, arriving fully assembled, pre-plumbed, and pre-wired, which simplifies installation. Integrated UV light offers additional sanitation, while programmed back-washing maintains the efficiency and longevity of the filtration media. This system is not just a functional addition to your home; it's a custom-fit solution designed to meet your specific water enhancement needs with an emphasis on design flexibility and customer-centric innovation.

Beyond Bottled Water Whole Home system



Your gateway to a world where every faucet and shower delivers the pristine quality of bottled water. Our Whole Home system sets a new standard in water excellence:

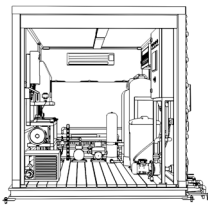


“Beyond Bottled Water Whole Home System,”

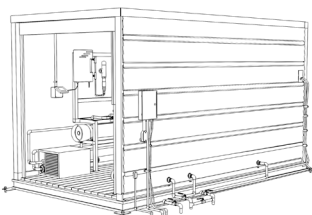
A cutting-edge water purification solution designed to redefine the standard of home water quality. This revolutionary system boasts an ultra-fine filtration process, capable of removing contaminants down to 0.0001 microns, ensuring unparalleled purity in every drop. Its commercial-sized reverse osmosis membranes offer superior purification, setting a new benchmark in water treatment technology. Coupled with high-output ozone sterilization, the system guarantees a consistently safe and sterile water supply. Not just pure, the water is also pH-balanced to perfection, maintaining a range of 8.0-8.5, ideal for both drinking and skin health.

Beyond its technical prowess, the system is a marvel of convenience and reliability. Housed in a fully enclosed, climate-controlled container, it ensures consistent performance regardless of environmental conditions. Remote system monitoring offers users peace of mind, with the ability to check system status from anywhere. Pre-assembled and ready for installation, it removes the hassle typically associated with such advanced setups.

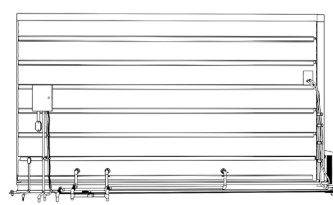
- 0.0001 Microns of contaminant removal for an entire estate.
- Commercial-sized reverse osmosis membranes for unrivaled purification.
- High-output ozone sterilization.
- pH balanced to perfection at 8.0-8.5.
- Fully enclosed, climate-controlled container for reliability.
- Remote system monitoring for peace of mind.
- Fully assembled, ready for installation.
- Capable of being uninstalled and moved to another location if necessary.



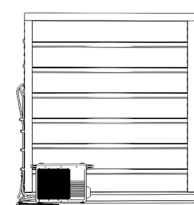
FRONT VIEW



PERSPECTIVE



RIGHT VIEW



BACK VIEW



Essence-Pro 7 Drinking Water System

Elevate your drinking water quality with our cutting-edge Essence-Pro Drinking Water System. Engineered with innovation in mind, this system offers a host of advantages that set it apart from the competition, ensuring you enjoy the purer, healthier water possible.

Scan for

- Spec. Sheet
- 3D modeling
- Augmented reality





Key Advantages:

Streamlined Design & Quality

- **Streamlined Elegance:** Our system beautifully blends curves and lines, offering aesthetic appeal.
- **Polished Finish:** Every detail reflects our commitment to excellence in both form and function.

User-Friendly Features

- **User-Friendly:** Say goodbye to complicated filter changes. Our tool-free design allows you to effortlessly replace filters.
- **Proprietary Cartridges:** Designed for excellent filtration performance and reliability.
- **Sanitary Quick Change:** Hassle-free filter replacement with a simple twist-on and twist-off process.

Compact & Reliable

- **Complete and Compact Filtration:** Experience comprehensive and space-saving filtration.
- **Unique Filter Blend:** Consistently enjoy better-tasting water.
- **Alkaline Cartridge:** Achieve a perfectly balanced pH level and naturally enriched water for improved taste and health benefits.

Efficiency & Safety

- **Unrivalled Efficiency:** Our system minimizes waste with an impressive 1 to 1 ratio membrane, saving water and reducing your ecological footprint.
- **Auto Shut-Off Safety:** Safety is paramount. Our system is equipped with an intelligent auto shut-off feature that stops filtration when the filter is disconnected, ensuring your safety and the quality of your water.

Upgrade your drinking water experience with the Essence Pro Drinking Water System, where premium quality meets user-friendly design. Say goodbye to the hassles of filter changes and enjoy the purity and convenience of consistently great-tasting water. Choose excellence; choose Essence Pro.

TRADITIONAL SOFTENER TANK AND FILTER

Double Tank Water Softener & Conditioner - Traditional Water Treatment Solution

Enhanced water quality with our USA-made Double Tank Water Softener & Conditioner. Crafted for efficiency and long-lasting service, this system ensures you and your family can enjoy soft, clean, and pure water at every faucet.

Product Description:

Our state-of-the-art Double Tank Water Softener and Conditioner provides a traditional standard of water treatment solutions. Designed and assembled in the USA, this system guarantees optimal performance. Not only does it soften hard water, but its premium-grade conditioning capabilities ensure your water is free from contaminants, unwanted taste, and odors.

Scan for

- Spec. Sheet
- 3D modeling
- Augmented reality



Key Features:

- **High-Quality Media:** Packed with the highest quality catalytic carbon, KDF, and a proprietary blend of mixed media, our system ensures your water is free from impurities, heavy metals, chlorine and chloramine.
- **Dual Tank System:** With a double tank design, enjoy continuous service even during regeneration. One tank actively treats while the other regenerates, ensuring there's no downtime.
- **USA Craftsmanship:** Proudly designed and assembled in the USA, our product epitomizes reliability, durability, and precision engineering.
- **Automatic Control Head:** Our intelligent and reliable automatic control head ensures hassle-free operation and maintenance. It intuitively manages system regeneration, saving you time and eliminating guesswork.
- **Efficient Service:** With our commitment to excellence, benefit from efficient after-sales service, guaranteeing the longevity of your investment.



TC_10

CAPACITY

42000 grain per regeneration and up to 500,000 gallons chlorine reduction

PULSE CONTROL

Fully programmable for control intervals and duration

SPEC

Peak flow rate up to 15 gpm
Hardness removal
Chlorines, Chloramine removal



TC_13

CAPACITY

70000 grain per regeneration and up to 1,000,000 gallons chlorine reduction

PULSE CONTROL

Fully programmable for control intervals and duration

SPEC

Peak flow rate up to 22 gpm
Hardness removal
Chlorines, Chloramine removal

“Displayed models represent a sample of our range. For specific needs, we offer solutions with greater capacities. Inquire about higher flow and capacity options.”

COMMERCIAL REVERSE OSMOSIS SYSTEM

Reliable Water Purification for Commercial Applications



The Commercial/Industrial Reverse Osmosis System from Water Service Elite offers robust and dependable water purification designed to meet the high demands of various commercial settings. With a capacity of up to 10,000 gallons per day, this system is perfect for restaurants, coffee shops, microbreweries, car washes, and food preparation facilities.

Key Features

- **High Capacity:** Capable of producing up to 10,000 gallons of purified water daily, ensuring an ample supply for high-demand environments.
- **Durable Construction:** Built on a powder-coated welded aluminum frame with stainless steel pressure vessels and fastening hardware. This ensures longevity and resistance to corrosion, even in harsh conditions.
- **Stainless Steel Components:** Enhance the system's robustness and ability to withstand daily wear and tear.
- **Minimal Maintenance:** Engineered for consistent performance with minimal user intervention, allowing you to focus on business operations without worrying about water quality issues.

Why Choose Our Reverse Osmosis System?

- Reliability
- Efficiency
- Versatility

Scan for

- Spec. Sheet
- 3D modeling
- Augmented reality



EMERGENCY MOBILE WATER SYSTEM

Ensuring safe drinking water in critical times

During natural disasters or unforeseen emergencies, access to clean drinking water becomes crucial for survival. The Emergency Mobile Water Filtration System from Water Service Elite is engineered to provide individuals and communities with a reliable source of clean water. Utilizing advanced filtration technology, this system removes contaminants and pathogens, ensuring water is safe for drinking, cooking, and personal hygiene.

Key Features

- **Advanced Filtration Technology:** Utilizes a multi-stage filtration process, including sediment filters, activated carbon filters, and a RO filtration membrane to effectively remove dirt, bacteria, viruses, and chemical pollutants.
- **High Capacity:** Capable of producing up to 500 gallons per day (GPD), depending on the incoming water quality. Uses desalination technology (a type of reverse osmosis) that can handle seawater at high pressure.
- **Portable and Durable:** Designed for easy transportation and resilience in harsh conditions, ensuring reliability when it's needed most.
- **Easy to Use:** Simple setup and operation, making it accessible for people of all ages and skill levels.
- **Eco-Friendly:** Operates without the need for chemical additives, preserving the natural quality of water while protecting the environment.

Applications

- **Emergency Preparedness:** Essential for homes, schools, and offices to ensure access to clean water during natural disasters, or other emergency situations.
- **Critical Infrastructure:** Ideal for hospitals, construction sites, and military bases where reliable access to clean water is essential.
- **Marine Use:** Perfect for yachts and boating, providing a dependable source of desalinated water.
- **Humanitarian Aid:** Can be deployed in disaster-struck or low-resource areas to provide immediate relief in water scarcity situations.



Scan for

- Spec. Sheet
- 3D modeling
- Augmented reality





Ultra Violet (LED)

Scan for

- Spec. Sheet
- 3D modeling
- Augmented reality





PRODUCT FEATURES & BENEFITS

Safe and reliable high intensity UV-C LED to inactivate most harmful bacteria, viruses and parasites including:

- Cryptosporidium, Giardia, E.Coli and Legionella with no compromise.
- NO chemicals, NO mercury, NO high voltage, No heat, and all materials are RoHS compliant.
- Innovative reaction chamber to provide the highest possible UV dose - validated by an independent and industry recognized laboratory.
- Integrated flow switch to ensure long life with low cost of ownership: NO yearly lamp replacement.
- Compact design for installation in tight spaces.
- Instant ON/OFF capability.
- Bluetooth enabled for ease of use and monitoring.
- Stable operation and independent temperature profile.

C-UV 200f

Maximum Flow Rate: 1 gpm
UV Dose: Greater than 20 mj/cm²
Operating Pressure:
10PSI - 100PSI



C-UV 200p

Maximum Flow Rate: 2 gpm
UV Dose: Greater than 20 mj/cm²
Operating Pressure:
10PSI - 100PSI



C-UV 200n

Maximum Flow Rate: 6 gpm
UV Dose: Greater than 40 mj/cm²
Operating Pressure:
10PSI - 100PSI



C-UV 200u

Maximum Flow Rate: 10 gpm
UV Dose: Greater than 20 mj/cm²
Operating Pressure:
10PSI - 100PSI



C-UV 200

Maximum Flow Rate: 20 gpm
UV Dose: Greater than 20 mj/cm²
Operating Pressure:
10PSI - 100PSI



C-UV 200+

Maximum Flow Rate: 30 gpm
UV Dose: Greater than 20 mj/cm²
Operating Pressure:
10PSI - 100PSI



The C-UV200n Water Purification System

The C-UV200n is expertly designed for both point of entry (POE) and point of use (POU) applications, making it an ideal water disinfection solution for a wide range of environments and applications. Whether for residential homes or various industries, the C-UV200n ensures exceptional water quality.

- Residential
- Healthcare Facilities
- Medical Device Manufacturing
- Semiconductor
- Pharmaceutical
- Ice Machines
- Water Dispensers

COMMON USES FOR THE C-UV

- Water dispensers and sinks
- Ice machines
- Coffee machines
- Drinking fountains
- Reusable water bottle refill stations



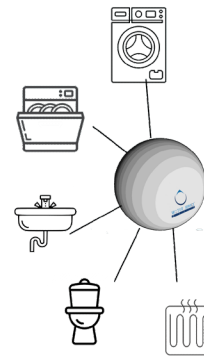
Water Management & Leak Detection

Accommodates pipes $\frac{3}{4}$ "- 6" in diameter

- Mobile app based (LTE) real time water consumption monitoring and leak detection
- Automatic, or app-initiated shutoff control
- Tracks water usage trends
- Maps carbon footprint based on water usage
- Earthquake sensor with automatic shutoff
- Freeze protection with automatic shutoff at programmed and adjustable temperature thresholds
- Cloud based data collection to track water consumption trends
- Certified homeowner's insurance discount

Scan for

- Spec. Sheet
- 3D modeling
- Augmented reality



FLOOD SENSORS

Detect water on the floor near any appliance



WATER METER

Collects sensor data wirelessly from the meter and flood sensors for edge computing. As soon as a leak is detected, it sends an alert to the WSE platform, and the supply line is automatically shut off.



COMMUNICATE WITH WSE CLOUD PLATFORM
Via Mobile, Ethernet or Wi-Fi



Automatic Water shut-off valve



WATER METER

- Accurate water Consumption
- Monitors water Pressure
- Monitors water Temperature





Gateway

- **Set Up:** Connect the device to your home network and configure your settings using our user-friendly app.
- **Monitor and Control:** Track water usage, receive alerts, and even shut off water remotely if a leak is detected.



Flood sensor

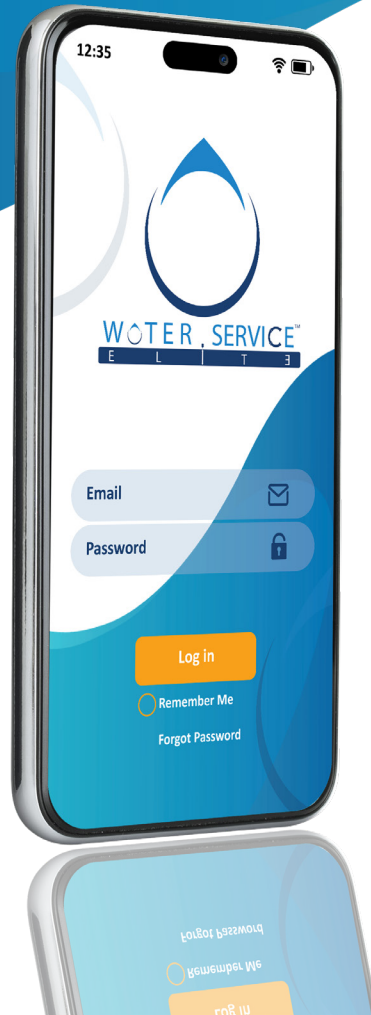
- **Real-Time Monitoring:** Keep an eye on water flow and usage with real-time data accessible from your mobile device or computer.
- **Automated Alerts:** Receive instant notifications on your smartphone or email the moment a potential leak is detected.



PRODUCT FEATURES & BENEFITS

- We provide water monitoring and leak detection with key market differentials
- Certified for Multi-family & Commercial Sub-metering & Billing and Single-Family home water risk management
- Leak Detection and remote shutoff (automatic or user initiated)
- Data & Analytics that can benefit all stakeholders (Property Owner, Insurance Provider and Utility)

Download Our App



Stay ahead of leaks with the **WaterServiceElite** App, your smart companion in water filtration and leak detection. Our innovative App offers real-time monitoring and alerts directly to your device, ensuring you can act swiftly to protect your home from water damage.

Features Include:

- **Instant Leak Alerts:** Receive notifications the moment a leak is detected.
- **Remote Monitoring:** Check the status of your water filtration system anytime, anywhere.
- **Scheduled Maintenance Reminders:** Keep your system running smoothly with timely reminders. (This feature is under development)

Easy to Use:

- **Download the App:** Search for “WaterServiceElite” on Google Play or the App Store.
- **Connect to Your System:** Follow simple, guided steps to connect the App with your WaterServiceElite filtration system.
- **Stay Informed:** Enjoy peace of mind with continuous monitoring and real-time updates.

[Download Now](#)



Your Home Water is Secure

Key Features:

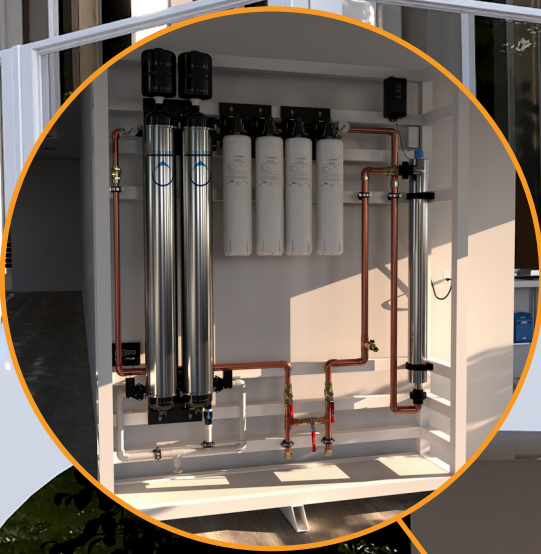
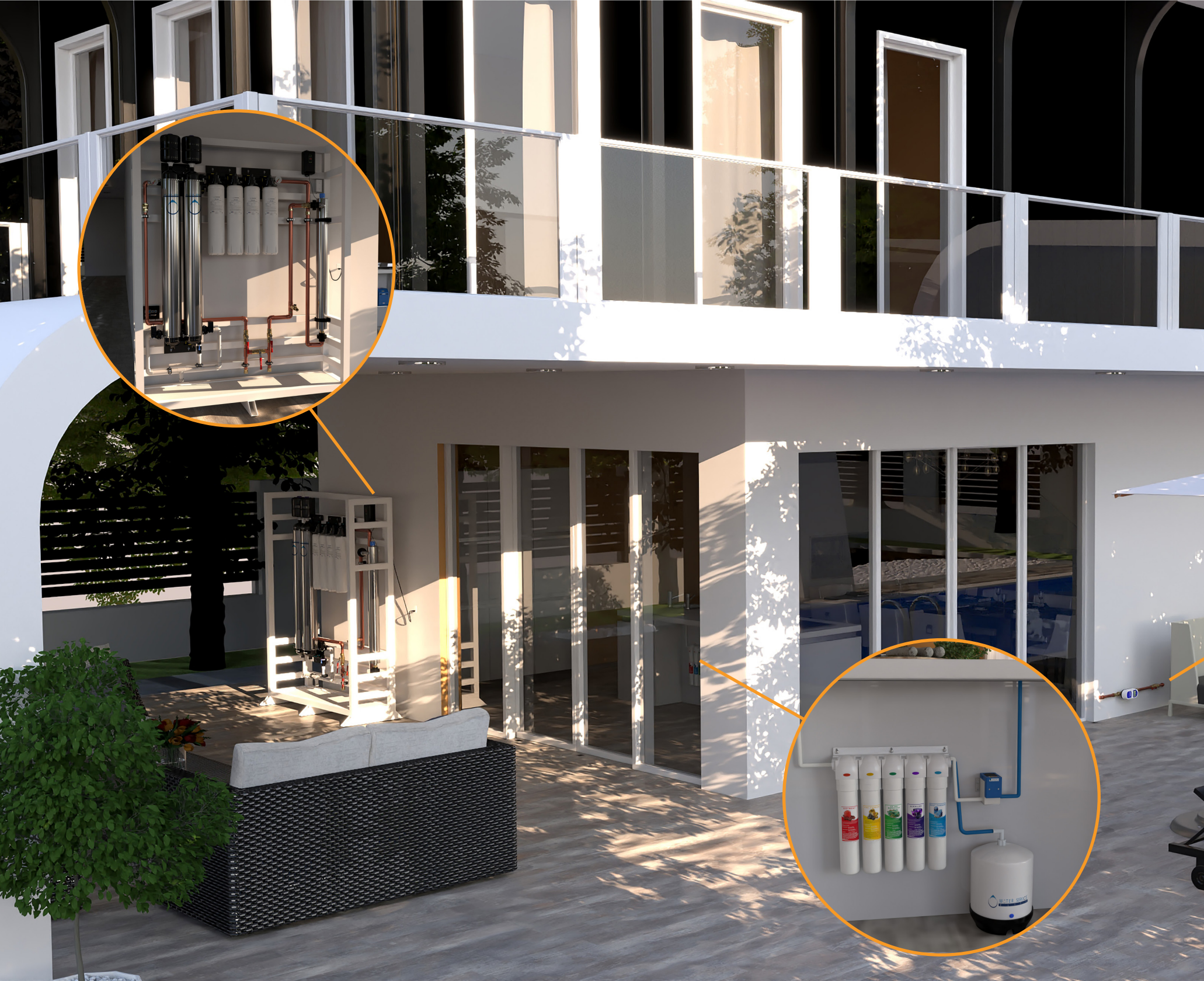
- **Real-Time Notifications:** Instant alerts on your smartphone when a leak is detected.
- **Remote Valve Control:** Shut off the water valve remotely via the app.
- **24/7 App accessibility:** Continuous monitoring for early leak detection.
- **User-Friendly Interface:** Easy-to-navigate app with clear information.
- **Customizable Alerts:** Personalize notifications to suit your needs.

With our Leak Detection System App, your home is protected even when you're away.



Enjoy the convenience and security of modern technology, and take control of your home's water safety today.







Integrate Complete Water Purity Throughout Your Home

Transform your home into a sanctuary of clean, high-quality water with our advanced filtration technologies. Our systems work in harmony to meet your unique water needs, ensuring exceptional quality and protection in every drop.

1. Complete System Integration:

Our innovative water solutions are designed for seamless integration. Whether you choose to combine Reverse Osmosis (RO) with Ultrafiltration (UF), add UV Disinfection, or include traditional Softener tanks, our systems enhance water quality for various household uses.

2. Tailored Water Solutions:

- **Customizable and Flexible:** Our systems are designed to be customized to fit your specific needs and space constraints, ensuring optimal performance and integration in every part of your home.
- **Kitchen:** Use our Eco_Friendly Reverse Osmosis system combined with Everest-Alkaline cartridges to ensure the highest quality drinking and cooking water.
- **Bathrooms:** Choose Advanced Ultra-filtration for soft, clean water that is gentle on your skin and hair. Enhance this setup with LED UV Disinfection to ensure pathogen-free water for personal care.
- **Water Management and Leak Detection:** Integrate our advanced water management and leak detection systems to monitor water usage, detect leaks, and prevent water damage, ensuring safety and efficiency throughout your home.
- **Synergy of Systems:** Each unit is responsible for specific sections of your home, working together seamlessly to provide comprehensive water quality enhancement.

3. Flexible and Adaptable:

Our flexible systems allow for customization and expansion to meet your evolving needs. Enhance your home with advanced water technology and enjoy the convenience and health benefits of a tailored water filtration setup.



COMPLETED PROJECTS

At Water Service Elite, we take pride in our legacy of excellence. Our completed projects stand as testaments to our commitment to quality and innovation. Browse through the captivating images below to witness the results of our dedication and expertise. From residential transformations to commercial marvels, we've left our mark with each project, and we look forward to creating more success stories with you. Thank you for considering Water Service Elite for your next venture.







WATER SERVICE[™]

ELITE

Corporate Address: 10005 Muirlands Blvd, Suite O, Irvine, CA 92618



WQA CWS-I #1048252



C55 Contractor License # 1105956



CDFA License # 33632

+1 (949) 491-5891 or +1 (818) 318-8448

www.WaterServiceElite.com

Sales@WaterServiceElite.com



WaterServiceElite